



THE RITZ - CARLTON
YACHT COLLECTION

HOSTING MEETINGS AND INCENTIVE GROUPS

FEBRUARY 2023



THE LUXURY YACHT EXPERIENCE

Designed to combine the luxury lifestyle of The Ritz-Carlton with the casual freedom of a yachting vacation, The Ritz-Carlton Yacht Collection will offer itineraries at a relaxed pace and introduce guests to the local cultures of each destination through curated immersive experiences ashore.

ALL-INCLUSIVE VALUE

PERSONALIZED SERVICE OF
THE RITZ-CARLTON®

MULTIPLE DINING
EXPERIENCES, 24-HOUR IN-
SUITE DINING, PLUS
SPECIALTY DINING

ALL-SUITE
ACCOMMODATIONS, EACH
WITH PRIVATE TERRACE

UNIQUE MARINA-STYLE
PLATFORM, DIRECT ACCESS
TO WATER

VARIETY OF SOCIAL SPACES
FOR RECEPTIONS &
ENTERTAINMENT

RELAXED YACHTING PACE,
OVERNIGHTS & DAYTIME
PORTS OF CALL

CURATED, IMMERSIVE
DESTINATION EXPERIENCES
ASHORE

SERVICE



SERVICE AT A GOLD STANDARD

Legendary service is provided by the Ladies and Gentlemen of The Ritz-Carlton, with almost one crew member for every guest.

- WARM
- SINCERE
- PERSONALIZED
- ANTICIPATORY

THE ALL-INCLUSIVE EXPERIENCE



- LUXURY ALL-SUITE ACCOMMODATIONS, EACH WITH PRIVATE TERRACE
- ACCESS TO A PERSONAL CONCIERGE
- MULTIPLE DINING EXPERIENCES, INCLUDING 24-HOUR IN-SUITE DINING
- MARINA PLATFORM WITH ACCESS TO NON-MOTORIZED WATER SPORTS WHILE AT ANCHOR
- BEVERAGES IN-SUITE AND THROUGHOUT THE YACHT
- ONBOARD ACTIVITIES AND ENTERTAINMENT
- ONBOARD GRATUITIES
- WI-FI THROUGHOUT THE YACHT

INTRODUCING EVRIMA

NOW SAILING!

- The highly anticipated debut of The Ritz-Carlton Yacht Collection has arrived; *Evrima* set sail for its maiden voyage from Barcelona on October 15th.
- Named for the Greek word meaning Discovery, *Evrima* inspires travelers to immerse themselves in exceptional experiences, explore new destinations and foster the spirit of adventure.
- Guests are primarily new-to-cruise, around 40-50 years in age.
- Reservations are open for the Caribbean and Mediterranean seasons through 2024. The yachts are also available for private charter for 2024 and beyond.



EVIRIMA BY THE NUMBERS



624
FEET
(190 METERS)

25,400
TONS

149
SUITES

298
GUESTS

246
CREW

1 to 1.21
CREW-TO-GUEST
RATIO

1 to 85.2
GUEST-TO-SPACE
RATIO

THE DINING EXPERIENCE

EVIRIMA DINING EXPERIENCES

INCLUDED

OPEN SEATING

MISTRAL

TALAAAT NAM

THE POOL HOUSE

THE EVRIMA ROOM

**Reservations encouraged once on board*



LIGHT BITES

THE BAR

THE LIVING ROOM

THE MARINA TERRACE

24-HOUR IN-SUITE DINING



ADDITIONAL FEE

SPECIALTY*

S.E.A.

DINING PRIVÉE

**Reservations required*



MISTRAL
MEDITERRANEAN INSPIRED
DECK 8





THE POOL HOUSE
CASUAL VARIETY
DECK 5



THE EVRIMA ROOM
LOCALLY INSPIRED
DECK 4











THE MARINA TERRACE
COCKTAILS AND LIGHT BITES
DECK 3



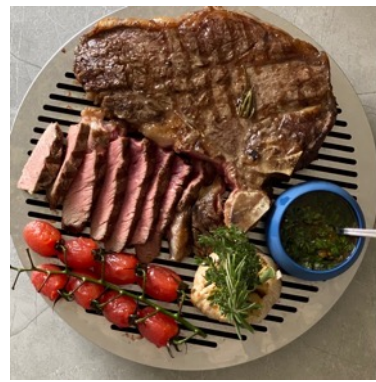
S.E.A.
SPECIALTY DINING
DECK 6



24-HOUR IN-SUITE DINING



SAMPLE MENU ITEMS



THE SUITE EXPERIENCE

EVIRIMA'S SUITES

- 149 SUITES, EACH WITH PRIVATE OCEAN-VIEW TERRACE
- HIGHEST PERCENTAGE OF LARGER SUITES IN LUXURY CRUISING
- TWO OWNER'S SUITES, EACH WITH PRIVATE WHIRLPOOL
- LOFTS AND COMBINABLE SUITES WITH FLEXIBLE CONFIGURATION
- SUPERIOR GUEST AMENITIES



SUITE AMENITIES AND FEATURES

Wake up every morning relaxed and carefree in one of our 149 expertly appointed suites. Designed to combine the modern elegance of The Ritz-Carlton with the casual luxury of the world's most magnificent super yachts, our suites set a new standard for luxury travel.

PRIVATE OCEAN-VIEW
TERRACE

DOUBLE VANITY
BATHROOMS

ESPRESSO MACHINE
WITH COMPLIMENTARY
COFFEES AND TEAS

24-HOUR IN-SUITE
DINING

COMPLIMENTARY WI-FI

LUXURIOUS CUSTOM
KING BED SYSTEM AND
LINENS

MINI-BAR PROVISIONED
TO GUESTS'
PREFERENCES

COMPLIMENTARY
BOTTLE OF CHAMPAGNE
UPON ARRIVAL

INDIVIDUAL ROBE AND
SLIPPERS

ACCESS TO A PERSONAL
CONCIERGE IN ALL SUITE
CATEGORIES

SUITES AT A GLANCE

THE OWNER'S SUITE



SUITE: 1091 SQ FT | 101 SQ M
TERRACE: 635 SQ FT | 59 SQ M
QUANTITY: 2

THE VIEW SUITE



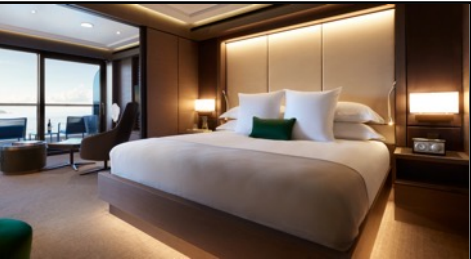
SUITE: UP TO 574 SQ FT | 53 SQ M
TERRACE: UP TO 129 SQ FT | 12 SQ M
QUANTITY: 4

THE TWO-STORY LOFT SUITE



SUITE: 611 SQ FT | 57 SQ M
TERRACE: 81 SQ FT | 7.5 SQ M
QUANTITY: 12

THE GRAND SUITE



SUITE: 587 SQ FT | 55 SQ M
TERRACE: UP TO 118 SQ FT | 11 SQ M
QUANTITY: 14

THE SIGNATURE SUITE



SUITE: 429 SQ FT | 40 SQ M
TERRACE: UP TO 118 SQ FT | 11 SQ M
QUANTITY: 27

THE TERRACE SUITE



SUITE: 300 SQ FT | 28 SQ M
TERRACE: UP TO 81 SQ FT | 7.5 SQ M
QUANTITY: 90

SUITE AMENITIES

diptyque
paris

Luxury bath amenities, including shampoo, conditioner, body wash and body lotion from Diptyque



400 thread count sateen linens and throw blanket from the Hotel Collection by Frette



Complimentary chilled bottle of Moët et Chandon champagne upon arrival



Pop-up vanity mirror in suite



Hair dryer and flat iron from Harry Josh



Espresso machine with complimentary Illy coffee and Dammann teas

PERSONAL CONCIERGE



All suites include access to a Personal Concierge, standing by to ensure every detail of the voyage is considered, from dinner reservations at our specialty restaurant to organizing destination experiences. The Personal Concierge is the onboard touchpoint to ensure a seamless journey from start to finish.

The Personal Concierge will be the ultimate insider on board for guests, providing recommendations and insight, tailoring their voyage specifically to them.

THE OWNER'S SUITE

QUANTITY: 2
SUITE: 1091 SQ FT | 101 SQ M
TERRACE: 635 SQ FT | 59 SQ M



THE VIEW SUITE

QUANTITY: 4
SUITE: UP TO 574 SQ FT | 53 SQ M
TERRACE: UP TO 129 SQ FT | 12 SQ M



THE TWO-STORY LOFT SUITE

QUANTITY: 12
SUITE: 611 SQ FT | 57 SQ M
TERRACE: 81 SQ FT | 7.5 SQ M



THE GRAND SUITE

QUANTITY: 14
SUITE: 587 SQ FT | 55 SQ M
TERRACE 108-118 SQ FT | 10-11 SQ M



THE SIGNATURE SUITE

QUANTITY: 27
SUITE: 429 SQ FT | 40 SQ M
TERRACE: 81-118 SQ FT | 7.5-11 SQ M



THE TERRACE SUITE

QUANTITY: 90
SUITE: 300 SQ FT | 28 SQ M
TERRACE: 54-81 SQ FT | 5-7.5 SQ M



CONNECTING AND CONVERTIBLE SUITES

All suites are designed for two (2) guests, but many can be connected to satisfy the needs of families or to appeal to meeting planners. An innovative system offers the flexibility to transform connecting suites into larger spaces by removing a panel of the wall.

All connecting suites include:

- An expanded private terrace
- Two (2) luxury custom king bed sleep systems
- Two (2) in-suite safes
- Two (2) double vanity bathrooms, each with a modern shower system
- Three (3) digital flat screen televisions
 - Two (2) in Terrace-to-Terrace configurations

Terrace-to-Grand (connected)



Terrace-to-Signature (convertible)



Terrace-to-Terrace (convertible)



CONNECTING AND CONVERTIBLE SUITES

INNOVATIVE WALL SYSTEM

Flexible configuration options allow connecting suites to expand to satisfy the needs of families to appeal to meeting planners seeking to provide similar accommodations for their top performers.

The opening measures 7.2 feet wide by 7.2 feet high (2.2 meters wide by 2.2 meters high).

CONNECTING SUITES

Of the 149 suites on board, the connecting suites total 43 single-suite configurations. If all connecting suites are utilized as single-suite configurations, inventory reduces to 106 suites.

Select Terrace Suites (18 total) are convertible suites that can be configured as an extended living and dining area or remain a second bedroom when connected to the adjacent suite.

Three (3) combinations of suite categories are available for connecting suites:

Terrace-to-Terrace: 24 total (12 Convertible)

Terrace-to-Signature: 7 total (Three (3) Convertible)

Terrace-to-Grand: 12 total (Three (3) Convertible)

CONNECTING TERRACE SUITES

SUITE: 600 SQ FT | 56 SQ M
TERRACE: UP TO 162 SQ FT | 15 SQ M



LIFE ON BOARD
EVRIMA

ACTIVITIES AND PUBLIC SPACES

THE MARINA

MULTI-FUNCTIONAL PLATFORM

DIRECT ACCESS TO THE WATER FROM DECK 3

COMPLIMENTARY WATERSPORTS DURING
PORT DAYS WHILE AT ANCHOR*

- PADDLEBOARDS
- WINDSURF BOARDS
- KAYAKS
- SAILBOATS
- SNORKELING ACCESSORIES

**Weather and local authorities permitting*



THE MARINA ACTIVITIES



90-minute private or semi-private lessons in sailing or windsurfing*

*available at an additional cost



Aquatic fitness classes:

Land and Sea: Strength and stability using standup paddle boards, stability balls, bans and kettlebells

Paddleboard Fitness: Core conditioning and body weight exercises

Stretching at Sea



Orientations for water sports equipment:

Sailing 101

Kayaking 101

Snorkeling 101 (where available)

Paddleboarding 101

THE MARINA EQUIPMENT

OCEAN REEF SNORKELING ACCESSORIES



PERSONAL FLOTATION DEVICES



HOBIE MIRAGE SHORELINE SAILBOAT

JOBE VENTURA STANDUP PADDLE BOARDS



HOBIE MIRAGE OUTBACK AND OCEAN KAYAK KAYAKS





PUBLIC SPACES ON BOARD EVRIMA



- INTIMATE, RELAXED, CASUALLY ELEGANT ATMOSPHERE
- INTUITIVE, RESIDENTIAL FEEL
- LOUNGE AND BAR OFFER A VARIETY OF ENTERTAINMENT EXPERIENCES
- ACTIVELY SOCIALIZE OR ENJOY PRIVACY
- PEACEFUL RETREAT BY DAY, SOCIAL SCENE BY NIGHT





THE OBSERVATION TERRACE

DECK 10









THE HUMIDOR

- Partnership with Davidoff to offer a wide assortment of world-class cigars including
 - Aniversario Series
 - Signature Series
 - Escurio Series
 - Winston Churchill Series
 - Oro Blanco Series
- Cocktails and spirits to pair with cigars, with Premium Reserve offerings available for an additional cost, including
 - Pappy Van Winkle
 - Rémy Martin Louis XII
 - Johnny Walker Blue Label
- History of Cigars educational event provides a sneak peak into the world of cigar making



SPA & WELLNESS

THE RITZ-CARLTON SPA® AND
FITNESS CENTER

SPA AND WELLNESS

- SPA DESIGNED AND OPERATED BY THE RITZ-CARLTON®
- INDOOR AND OUTDOOR TREATMENT ROOMS AND RELAXATION AREAS
- BEAUTY LOUNGE AND GENTLEMEN'S GROOMING SALON

- TECHNOGYM EQUIPMENT
- GROUP EXERCISE CLASSES
- PERSONAL TRAINING
- FITNESS ON DEMAND



THE RITZ-CARLTON SPA OFFERINGS

Guests can escape to their own personal oasis at The Ritz-Carlton Spa to indulge in the scents and delights from around the world while enjoying a relaxing massage or a nourishing facial featuring products from 111SKIN and ESPA.

- Massages
- Facials (for both ladies and gentlemen)
- Skin Treatments
- Salon Services
- Barber Services



THE RITZ-CARLTON
YACHT COLLECTION

SPA

An indulgence or a necessity,
a treatment of pampering or self-care,
an awakening or an escape, the Spa
experience signifies something
different for everyone. The Spa
experience aboard The Ritz-Carlton
Yacht Collection invites you to indulge
in scents and delights from around the
world. Inspired by the destinations we
visit and carried to life by our senses,
our treatments soothe the senses,
refresh the body and renew the spirit.
Alike only, this is make and drift away
in relaxation aboard your seas at sea.

SPA TREATMENTS



60- or 90-minute calming or deep-muscle massage, featuring a selection of aromatherapy oils, hot stones and enhancements designed by ESPA and 111SKIN.



Skin-nourishing treatments, including leg masques, exfoliating body scrubs and facials to hydrate and reinvigorate



Manicure and pedicure services performed with 111SKIN products paired with face masks to leave the skin and cuticles smooth and nourished



Salon services for men and women, including a clean shave or a hair cut and style

FITNESS STUDIO OFFERINGS

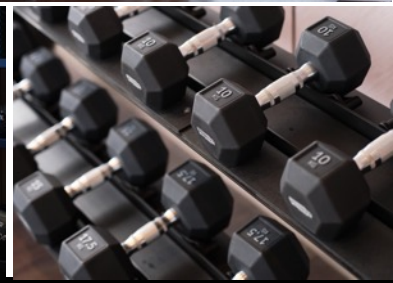
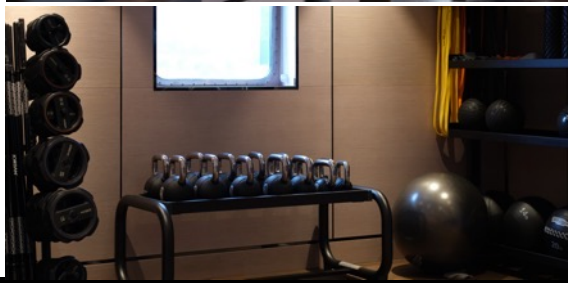
In addition to the spa, the onboard Fitness Studio is home to a health and wellness program integrating fitness and spa with lectures and nutrition that can be customized to fit guests' needs.

FITNESS STUDIO OFFERINGS:

- Personal Training
- Group Exercise Classes
- Private or Group Yoga Classes
- Fitness on Demand Access



FITNESS STUDIO OFFERINGS









THE SPA TERRACE

DECK 9











RITZ KIDS

- DEDICATED SPACE ON BOARD FOR CHILDREN AGES 4 TO 12
- ENHANCED SERVICES AVAILABLE DURING HOLIDAYS AND SUMMER MONTHS

MORNING SESSION: 9:00AM – 12:00PM \$45

AFTERNOON SESSION: 1:00PM – 4:00PM \$45

EVENING SESSION: 6:00PM – 9:00PM \$65



RITZ KIDS PROGRAMMING



The Ritz Kids program is geared toward children from ages 4 to 12. Four key pillars are designed to inspire natural curiosity and creativity and to engage their senses.

OCEANS & MARINE LIFE: Examining our relationship with water and marine life while enlivening a natural curiosity into the underwater world of sea creatures

Sample activities: Water Cycle Craft, Create a Creature

DESTINATIONS AND THEIR CULTURES: Celebrating the cultures from around the world through art, music, theatre and play

Sample activities: Culture and Clay, Mystery Detective

OCEAN STEWARDSHIP AND SAILING: Shining a light on traditional and modern sailing practices including navigation, marine communication and ship stability

Sample activities: Destination Navigation Chart, Ropes and Knots

ENVIRONMENTAL RESPONSIBILITY: Promoting our role in the health of our planet for the future including sustainability, resource consumption and protecting our ecosystem

Sample activities: Water Sampling Science Experiment, Yacht Sustainability Systems

ENTERTAINMENT AND ENRICHMENT

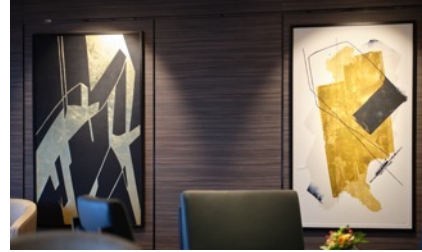


Led by the Entertainment & Enrichment Director, onboard entertainment staff features an in-house quartet comprised of one pianist, one vocalist, one guitarist and one drum/sax musician.



A global network of world-renowned entertainers and enrichment artists joins the yacht for specific sailings to suit the regions we visit.

Our detailed activities program features elements such as classic movies, themed dinners with curated entertainment and lectures.



A partnership with Enterprise & Art creates an immersive art program and curate a permanent collection of art showcased throughout the yacht.

Limited print editions and unique are available for purchase.



The onboard Arts Concierge will oversee the Art Program experience and provide regular educational talks on art history, curation and the stories behind each piece.

ITINERARIES

RELAXED PACE



- MORE OVERNIGHTS IN PORTS OF CALL
- MOST VOYAGES RANGE 7-10 NIGHTS
- ABILITY TO COMBINE BACK-TO-BACK VOYAGES WITHOUT REPEATING PORTS
- INTIMATE SIZE ALLOWS ACCESS TO COVETED YACHTING DESTINATIONS

THE SHORE COLLECTION

EXPERIENCES ASHORE

Five themed categories

Iconic sights - Active Explorations

Epicurean Experiences - Stirring the Senses

Cultural Connections

Concierge ashore for custom arrangements or private excursions



Yoga on a private beach in Grenada

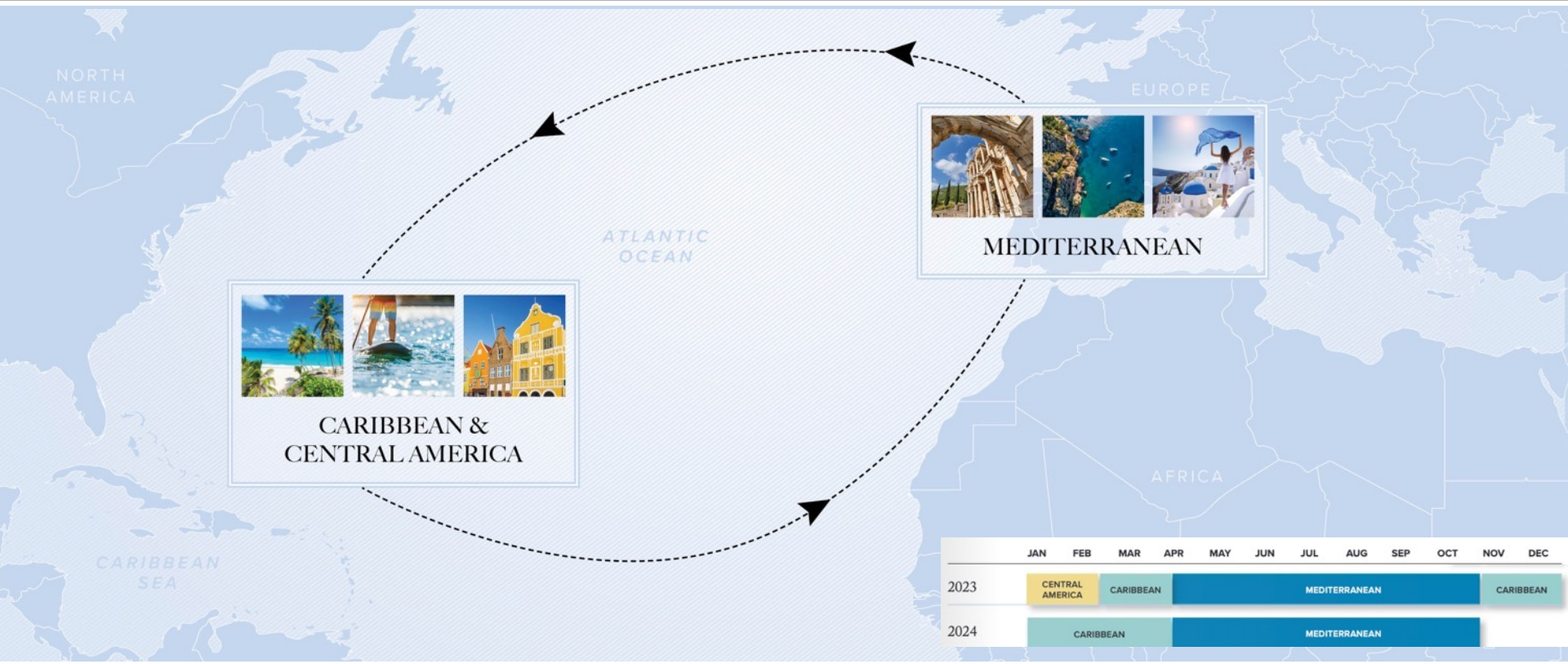
Tour the ruins of Ephesus

Zipline over the Costa Rican Rainforest

Hunt for truffles in Tuscany

DJ Workshop in Ibiza

2023-2024 SEASONS



2023 VOYAGE CALENDAR

CARIBBEAN

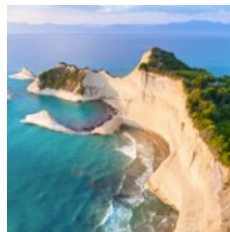
DATE	NIGHTS	ITINERARY
FEB 9	5	FORT LAUDERDALE TO FORT LAUDERDALE
FEB 14	7	FORT LAUDERDALE TO FORT LAUDERDALE
FEB 21	7	FORT LAUDERDALE TO FORT LAUDERDALE
FEB 28	5	FORT LAUDERDALE TO FORT LAUDERDALE
MAR 5	7	FORT LAUDERDALE TO SAN JUAN
MAR 12	7	SAN JUAN TO BARBADOS
MAR 19	7	BARBADOS TO BARBADOS
MAR 26	7	BARBADOS TO SAN JUAN
APR 2	5	SAN JUAN TO SAN JUAN
APR 7	7	SAN JUAN TO SAN JUAN
APR 14	13	SAN JUAN TO LISBON



NOV 19	7	BARBADOS TO BARBADOS
NOV 26	5	BARBADOS TO SAN JUAN
DEC 1	5	SAN JUAN TO SAN JUAN
DEC 6	7	SAN JUAN TO FORT LAUDERDALE
DEC 13	7	FORT LAUDERDALE TO FORT LAUDERDALE
DEC 20	7	FORT LAUDERDALE TO FORT LAUDERDALE
DEC 27	7	FORT LAUDERDALE TO FORT LAUDERDALE

MEDITERRANEAN

DATE	NIGHTS	ITINERARY
APR 27	10	LISBON TO BARCELONA
MAY 7	10	BARCELONA TO ROME
MAY 17	7	ROME TO MARSEILLE
MAY 24	7	MARSEILLE TO ROME
MAY 31	10	ROME TO VENICE
JUN 10	9	VENICE TO ATHENS
JUN 19	5	ATHENS TO ATHENS
JUN 24	7	ATHENS TO VALLETTA
JUL 1	7	VALLETTA TO ROME
JUL 8	7	ROME TO NICE
JUL 15	7	NICE TO BARCELONA
JUL 22	11	BARCELONA TO ROME



AUG 2	10	ROME TO VENICE
AUG 12	7	VENICE TO ROME
AUG 24	9	VALETTA TO ATHENS
SEP 2	7	ATHENS TO ATHENS
SEP 9	7	ATHENS TO ISTANBUL
SEP 16	11	ISTANBUL TO ATHENS
SEP 27	7	ATHENS TO ATHENS
OCT 4	11	ATHENS TO ROME
OCT 15	7	ROME TO BARCELONA
OCT 22	9	BARCELONA TO TENERIFE
OCT 31	7	TENERIFE TO TENERIFE
NOV 7	12	TENERIFE TO BARBADOS

2024 VOYAGE CALENDAR

2024 HIGHLIGHTS

CARIBBEAN ISLANDS

WINDWARD ISLANDS

JAMAICA

BERMUDA

AZORES

BALEARIC ISLANDS

GREEK ISLES

FRENCH RIVIERA

ITALIAN RIVIERA

CARIBBEAN

DATE	NIGHTS	ITINERARY
JAN 3	7	SAN JUAN TO BARBADOS
JAN 10	7	BARBADOS TO BARBADOS
JAN 17	7	BARBADOS TO BARBADOS
JAN 24	6	BARBADOS TO SAN JUAN
JAN 30	5	SAN JUAN TO SAN JUAN
FEB 9	8	SAN JUAN TO SAN JUAN
FEB 17	7	SAN JUAN TO BARBADOS
FEB 24	7	BARBADOS TO BARBADOS
MAR 2	5	BARBADOS TO SAN JUAN
MAR 11	5	SAN JUAN TO SAN JUAN
MAR 16	7	SAN JUAN TO SAN JUAN
MAR 28	7	SAN JUAN TO BERMUDA
APR 4	11	BERMUDA TO LISBON

MEDITERRANEAN

DATE	NIGHTS	ITINERARY
APR 15	11	LISBON TO BARCELONA
APR 26	11	BARCELONA TO ROME
MAY 7	10	ROME TO VALLETTA
MAY 28	7	ROME TO ROME
JUNE 9	10	VALLETTA TO ATHENS
JUN 19	11	ATHENS TO VENICE
JUN 30	7	VENICE TO VENICE
JUL 7	7	VENICE TO ATHENS
JUL 14	7	ATHENS TO ATHENS
JUL 21	7	ATHENS TO VENICE
JUL 28	10	VENICE TO ROME
AUG 7	7	ROME TO NICE
AUG 14	7	NICE TO ROME
AUG 31	7	ROME TO VALLETTA
SEP 7	8	VALLETTA TO ATHENS
SEP 20	11	ATHENS TO ATHENS
OCT 1	9	ATHENS TO VALLETTA
OCT 10	7	VALLETTA TO NICE
OCT 17	7	NICE TO BARCELONA
OCT 24	10	BARCELONA TO TENERIFE
NOV 3	11	TENERIFE TO BARBADOS

SPECIAL OCCASION PACKAGES

WEDDINGS AND VOW RENEWALS - \$900 PER COUPLE / \$450 PER GUEST

Our Wedding and Vow Renewal package allows guests to celebrate their special day with loved ones while onboard, with a ceremony officiated by the captain* and pre- and post- ceremony reception and toast.

This package includes lunch or dinner at our Michelin-inspired specialty restaurant or in our Dining Privéé, bouquets and boutonnieres for the bridal party, live music and a personalized cake.

CELEBRATIONS - \$950 PER COUPLE

Couples traveling with us who are celebrating a special occasion such as an anniversary or honeymoon may purchase our Celebrations package which includes a bottle of champagne, special turndown amenities, a couple's massage at the onboard spa, and their choice of Epicurean Experience from The Shore Collection.

Packages can be booked 134 days prior to sailing.

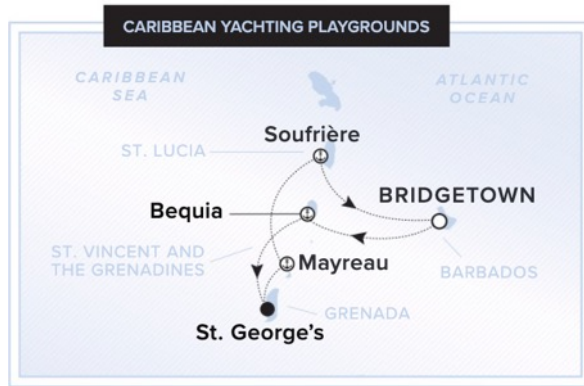
For more information, please email special.services@ritz-carltonyachtcollection.com

*The Ritz-Carlton Yacht Collection does not perform legally binding ceremonies on board.
It is recommended for couples to hold a civil ceremony to ensure they meet local marriage law requirements.



BUYOUTS,
MEETINGS AND
GROUPS

CHARTER OPPORTUNITIES



BARBADOS TO BARBADOS

NIGHTS: 5

DEPARTS: WEDNESDAY, JAN 24, 2024



BARBADOS TO SAN JUAN

NIGHTS: 6

DEPARTS: MONDAY, JAN 29, 2024

CHARTER OPPORTUNITIES



VALLETTA TO ROME

NIGHTS: 11

DEPARTS: FRIDAY, MAY 17, 2024



ROME TO VALLETTA

NIGHTS: 5

DEPARTS: TUESDAY, JUNE 4, 2024



VALLETTA TO ROME

NIGHTS: 5

DEPARTS: MONDAY, AUGUST 26, 2024

BOOKING WINDOW OVERVIEW

FULL YACHT BUYOUTS / CHARTERS

- The Ritz-Carlton Yacht Collection employs a No-Walk Policy
- Select 2023 itineraries are hidden from the public for charter opportunities
- Customizable itineraries are available for 2024 and beyond
- A full yacht buyout / charter offers complete flexibility to customize every detail, from the voyage itinerary to excursions ashore and flexible suite configurations
- The Ritz-Carlton Yacht Collection is accepting full yacht buyout / charter requests where a minimum of five nights is required.

INCENTIVE GROUPS

- The Ritz-Carlton Yacht Collection is now accepting incentive group requests for the 2022 and 2023 seasons
- Itineraries generally open for sale 18 months prior to the first sailing of that sail year
- A minimum of 10 suites can be accommodated for a smaller group or up to 30 suites can be accommodated for a larger gathering
- No more than two groups will be permitted per voyage
- A maximum of 30 suites per group ensures the comfort and enjoyment of all guests on the yacht

FULL YACHT BUYOUTS/CHARTERS/MEETINGS

WHY CHOOSE US?

- Inclusive fare for ease of budgeting
- Flexible, customizable itineraries, excursions and events
- Sleek yachts with impressive modern design and interiors
- Spacious, airy suites with endless views
- Inherently secure, exclusive, distraction-free environment
- Luxurious amenities and legendary personalized service
- Dining options from casual al fresco venues to Michelin-inspired cuisine
- Multiple destinations while only unpacking once

CONSIDER OUR YACHTS FOR:

- Employee and sales incentives
- Meetings and conferences
- Customer and client appreciation
- Special group events, celebrations and milestones
- Accommodations for international sporting events, festivals, etc.



Contact us to create your custom buyout quote

INCENTIVE GROUPS

- Examples of incentive groups include company sponsored events, meetings, or incentive trips, a group where one person pays, or a group that requires operational support.
- Rates are contracted and locked at signing.
- Minimum of ten suites is required and a maximum of 30 suites can be accommodated at double occupancy.
- For every ten suites confirmed, one complimentary tour conductor suite is earned. Max of two suites can be earned.

Group value added amenities include:

- \$300 yacht credit per suite to use toward shore excursions, specialty dining and more.
- Choice of either one, two-hour cocktail reception or two, one-hour cocktail receptions.

SCHEDULE	DEPOSIT %	CANCELLATION %
Upon execution	20% due	--
365 days prior to embarkation date	20% due	up to 20% initial suite count
270 days prior to embarkation date	20% due	up to 15% of current booked suites
180 days prior to embarkation date	20% due	up to 10% of current booked suites
120 days prior to embarkation date	20% due	up to 5% of current booked suites

VENUE CAPACITY

- A stand-up reception can be held for all guests in the Observation Lounge or the bow of the yacht.
- All guests can be seated for dining at once in different venues. A dining event for all guests can be arranged on land.
- Multifunction space has various seating configurations for breakout sessions.

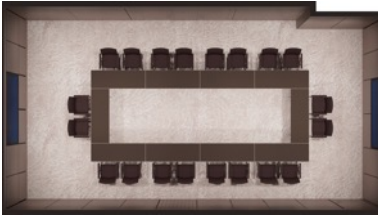
PUBLIC AREAS	LOCATION	APPROX. SIZE FEET ²	APPROX. SIZE METERS ²	SEATING CAPACITY	STANDING CAPACITY	STAND-UP RECEPTION
THE OBSERVATION TERRACE	DECK 10	4800	446	92 (+12 AFT)	200	
THE OBSERVATION LOUNGE	DECK 10	3100	288	90	150	■
THE HUMIDOR	DECK 10	115	35	14	14	
MISTRAL	DECK 8	4359	405	121	150	
BOW OF THE YACHT	DECK 6	3982	370	N/A	175	■
THE BAR	DECK 6	259	79	11	30	
S.E.A.	DECK 6	683	63.5	28	N/A	
TALAAAT NAM	DECK 6	1119	104	42	125	
TALAAAT NAM (AL FRESCO DINING)	DECK 6	1108	103	36	125	
THE POOL HOUSE	DECK 5	3132	291	92	N/A	
THE POOL	DECK 5	4187	389	78	150	
THE LIVING ROOM	DECK 4	6145	596	124	200	
THE MEETING ROOMS	DECK 4	559	52	35	45	
THE EVRIMA ROOM	DECK 4	4359	405	131	225	
DINING PRIVÉE	DECK 4	279	26	10	20	
THE MARINA TERRACE	DECK 3	1711	159	41 (+16 WITH PLATFORM)	60	
THE MARINA	DECK 3	1657	154	20	60	
THE MEETING ROOMS	BOARDROOM LAYOUT	CLASSROOM LAYOUT	U-SHAPE LAYOUT			
HALF ROOM CAPACITY	12	15	16			
WHOLE ROOM CAPACITY	20	35	32			

MEETING SPACE

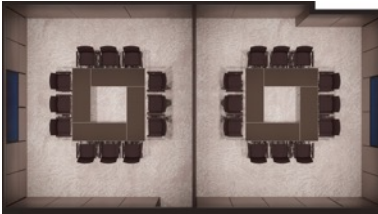
For groups looking to conduct meetings, gatherings or breakout sessions while on board, a multifunction meeting space will be available to reserve for no additional fee, with various options for seating configurations. A simple food and beverage setup will be provided, and additional catering can be ordered at an additional cost.

BOARDROOM LAYOUT

WHOLE ROOM CAPACITY: 20



HALF ROOM CAPACITY: 12

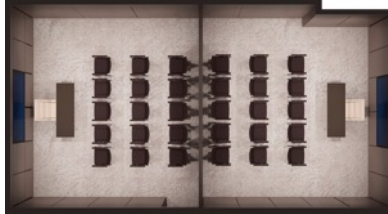


CLASSROOM LAYOUT

WHOLE ROOM CAPACITY: 35



HALF ROOM CAPACITY: 15

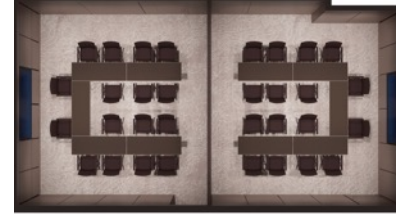


U-SHAPE LAYOUT

WHOLE ROOM CAPACITY: 32



HALF ROOM CAPACITY: 16



AUDIO/VISUAL CAPABILITIES

VENUE	AUDIO	VIDEO	LIGHTING	OTHER
OBSERVATION LOUNGE / TERRACE	Ceiling speakers, microphones, subwoofers, amplifiers	Projector, motorized screen, laptop	Outdoor moving lights for dance floor, floor uplights	iPad for control, DJ & Band input box
SPA & FITNESS STUDIO	Ceiling speakers, microphones, aerobics subwoofer	Aerobics TV	--	--
MISTRAL	Ceiling speakers, outdoor subwoofer	Outdoor TV	--	Band input panel
S.E.A. / TALAAT NAM	Ceiling speakers, microphones, outdoor subwoofer	--	--	--
RITZ KIDS	Ceiling speakers	TV Display, HDMI input	--	--
MAIN POOL DECK	Exterior speakers, microphones, subwoofers, amplifiers	--	Moving lights, front light for band	iPad for control
THE POOL HOUSE	Ceiling speakers, microphones	--	Downlights	iPad for control
THE EVRIMA ROOM	Ceiling speakers, microphones	--	--	--
THE LIVING ROOM	Ceiling speakers, microphones, subwoofer	--	Downlights	iPad for control
THE MEETING ROOMS	Ceiling speakers, microphones, cinema subwoofers, amplifier	Cinema projector, 4K Blu-ray player, wireless presentation solution, 80" interactive Digital Board	-	iPad for control
THE MARINA	Ceiling speakers, microphones, subwoofers, amplifiers	--	--	--
THE OWNER'S SUITES	Ceiling speakers, subwoofers, amplifiers	TV Display 55", TV Display 42", Blu-ray player	--	--

DINING HOURS

DINING VENUE	TYPE	BREAKFAST	LUNCH	DINNER
MISTRAL	OPEN SEATING	--	(At Sea) 11:30am – 2:30pm	6:00pm – 10:00pm
TALAAAT NAM	OPEN SEATING	--	(In Port): 12:00pm – 2:00pm (At Sea): 11:30am – 2:30pm	6:00pm – 10:00pm
THE POOL HOUSE	OPEN SEATING	(In Port): 6:30am – 10:00am (At Sea): 6:30am – 10:30am	11:30am – 2:30pm Poolside Bites: 11:30am – 5:00pm	(In Port): 5:00pm – 10:30pm (At Sea): 5:30 – 10:00pm Late Night Bites (In Port): 10:30pm – 1:00am Late Night Bites (At Sea): 10:00pm – 1:00pm
THE EVRIMA ROOM	OPEN SEATING	7:00am – 10:30am	(In Port): 11:30am – 2:00pm (At Sea): 12:00pm – 2:30pm	(In Port): 7:00pm – 10:00pm (At Sea): 5:30 – 10:00pm
S.E.A.	SPECIALTY*	--	Private Group Lunches only	6:00pm – 10:00pm
DINING PRIVÉE	SPECIALTY*	--	(In Port): 11:30am – 2:00pm (At Sea): 12:00pm – 2:30pm	(In Port): 7:00pm – 10:00pm (At Sea): 5:30 – 10:00pm
THE BAR	LIGHT BITES	--	(In Port): 12:00pm – 2:00pm (At Sea): 11:30am – 2:30pm	6:00pm – 10:00pm Late Night: 10:00pm – 1:00am
THE LIVING ROOM	LIGHT BITES	(In Port): 6:00am – 10:30am (At Sea): 7:00am – 10:30pm	11:00am – 2:00pm Afternoon Tea: 3:00pm – 4:30pm	5:30pm – 9:00pm Late Night Bites (In Port) 9:00pm – 12:00am Late Night Bites (At Sea, At Anchor): 9:00pm–1:00am
THE MARINA TERRACE	LIGHT BITES	(At Anchor): 7:00am – 10:00am Poolside bites: 11:30am - 5:00pm	(At Anchor): 11:30am – 2:30pm	(At Anchor): 5:00pm – 8:00pm
IN-SUITE DINING	OTHER	24 Hours		

*GROUP SPECIALTY DINING

- Groups of up to 28 attendees can privatize S.E.A. for a three-course lunch inclusive of pre-selected fine wines and champagnes (\$175 per person)
- Groups of up to 10 attendees can privatize Dining Privée for a culinary experience with pre-selected wines and champagnes (\$1500 for the space)
- Both group specialty dining options require reservations in advance

INCLUSIONS AND EXCLUSIONS

INCLUSIONS	PRIVATE OCEAN-VIEW TERRACES	COMPLIMENTARY MULTIPLE DINING OPTIONS	COMPLIMENTARY ALCOHOLIC & NON-ALCOHOLIC BEVERAGES	COMPLIMENTARY USE OF AUDIO/VISUAL EQUIPMENT
	24/7 ACCESS TO PERSONAL CONCIERGE	ONBOARD ENTERTAINMENT, ENRICHMENT & FITNESS	COMPLIMENTARY WI-FI	ONBOARD GRATUITIES
EXCLUSIONS	PORT TAXES & FEES – ITINERARY DEPENDENT	FUEL SUPPLEMENT (IF APPLICABLE)	SPECIALTY DINING IN S.E.A. AND DINING PRIVEE	SHORE COLLECTION EXCURSIONS
	PRE/POST CRUISE HOTEL, AIR, LUGGAGE, TRANSFERS	UPGRADED PRIVATE RESERVE WINES & SPIRITS	POTENTIAL REVENUE LOSS ASSESSMENT (IF APPLICABLE)	SPA SERVICES, SALON AND ONBOARD PURCHASES

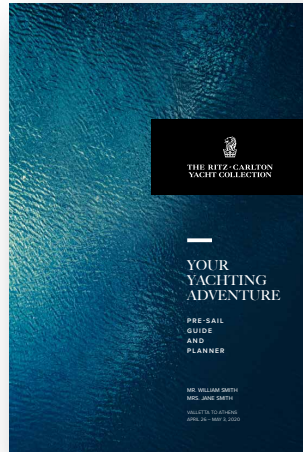
PRE-SAILING DOCUMENTS

PRE-SAILING GUIDE

Personalized and customized — this booklet will be sent as a hyperlink in the customer journey process and will be available for mobile as well.

Customization includes:

- Guest names
- Voyage / Itinerary
- Travel Agent / Direct Contact
- Flight details
- Suite highlights / amenities
- The Shore Collection bookings with option to book additional
- Spa appointments
- Dining reservations



YOUR ITINERARY

GUESTS
Mr. William Smith
Ms. Jane Smith

TRAVEL AGENT
ABC Travel - Mr. Joe Tyler
500 W. Beach Rd.
Miami, FL 33140
(305) 555-1234

VOYAGE INFORMATION
Voyage to Athens

BOOKING NUMBER
0000000

VOYAGE
0000000 The Signature Suite 700

DEPARTURE DATE **DEPT** **DEPARTURE TIME**
Sun, Apr 28, 2020 Valletta, Malta 08:00 - 09:00am

ARRIVAL DATE **ARRV** **ARRIVAL TIME**
Sun, May 3, 2020 Athens (Piraeus), Greece 7:00am

FLIGHT INFORMATION

JANNEY	FLY #	AIRPORT	CLASS	TIME
Lufthansa	FR 428	JFK / New York	Sun, Apr 25, 2020	Dep. 0:00am
FRA / Frankfurt	Sun, Apr 26, 2020	Arr. 5:30am		
Lufthansa	FR 576	FRA / Frankfurt	Sun, Apr 26, 2020	Dep. 10:30am
M.A. / Malta	Sun, Apr 28, 2020	Arr. 10:00am		

VALLETTA TO ATHENS

They can be seen from the top of the tower, the tower is the highest point in the city and the highest point of the island. The tower is the highest point in the city and the highest point of the island. The tower is the highest point in the city and the highest point of the island.

TRAVEL AGENT
ABC Travel - Mr. Joe Tyler
500 W. Beach Rd.
Miami, FL 33140
(305) 555-1234

VOYAGE INFORMATION
Voyage to Athens

BOOKING NUMBER
0000000

VOYAGE
0000000 The Signature Suite 700

DEPARTURE DATE **DEPT** **DEPARTURE TIME**
Sun, Apr 28, 2020 Valletta, Malta 08:00 - 09:00am

ARRIVAL DATE **ARRV** **ARRIVAL TIME**
Sun, May 3, 2020 Athens (Piraeus), Greece 7:00am

FLIGHT INFORMATION

JANNEY	FLY #	AIRPORT	CLASS	TIME
Lufthansa	FR 428	JFK / New York	Sun, Apr 25, 2020	Dep. 0:00am
FRA / Frankfurt	Sun, Apr 26, 2020	Arr. 5:30am		
Lufthansa	FR 576	FRA / Frankfurt	Sun, Apr 26, 2020	Dep. 10:30am
M.A. / Malta	Sun, Apr 28, 2020	Arr. 10:00am		



YOUR SUITE HIGHLIGHTS THE SIGNATURE SUITE / 700

MR. WILLIAM SMITH
MS. JANE SMITH

Designed for the comfort of luxury breakfast beds with its own terrace, the suite's side experience is unrivaled at sea.

MAJESTIC OCEAN VIEWS

- Private terrace overlooking the ocean

SPACIOUS SUITE ACCOMMODATIONS

- Luxury custom king bed
- Wine cellar
- Double vanity bathroom

DEDICATED PERSONAL CONCIERGE

- Dedicated Personal Concierge in your single onboard touch point to arrange a seamless, seamless journey from beginning to end
- 24-hour in-suite dining, express machine, complimentary coffee and tea, and a refrigerator personalized to your preferences



YOUR SUITE HIGHLIGHTS THE SIGNATURE SUITE / 700

ACCOMMODATIONS

BED & BATH

- Luxury custom king bed sleep system
- Double vanity bathroom
- Modern, sleek bathtub with separate shower
- Luxury bed and bath linens provided exclusively for The Ritz-Carlton Yacht Collection

SUITE FEATURES

- Private, spacious terrace overlooking the ocean
- Luxurious and modern living and dining area
- Convertible sleep sofa

SSC

Suite: 476 SQ FT / 44 SQ M
Terrace: 101 SQ FT / 9 SQ M

SERVICES AND AMENITIES

- 24-hour in-suite dining
- Luxury bath amenities & individual robe and slippers
- Complimentary WiFi
- Choice of complimentary chilled bottle of Champagne or wine upon arrival
- Express check-in with complimentary coffee and tea
- Discrete flat screen smart television
- In-suite safe
- Vanity mirror
- Hair dryer
- High-quality linens, pillow, upon request
- 220V and 110V outlets, as well as USB charging capabilities

TO VIEW VIDEO AND ADDITIONAL IMAGES, CLICK HERE

WHAT'S NEW

POSITIVE GUEST FEEDBACK



"Staff was warm, friendly and cared a great deal about making this a great experience for us."

"Evrima is a beautiful ship inside and out. Our room was excellent and thoughtfully designed with beautiful finishes."

"The service personnel were outstanding. Always with a smile, a greeting and a willingness to help. It was really cool to be on the inaugural voyage of Evrima."

"Overall, our experience was exceptional. The room product was spectacular, the public spaces beautiful! We made life-long friends with other guests, enjoyed the beauty of the ship and the ports, and made memories that will last forever. Our intent is to book again - perhaps, Greece to Rome."

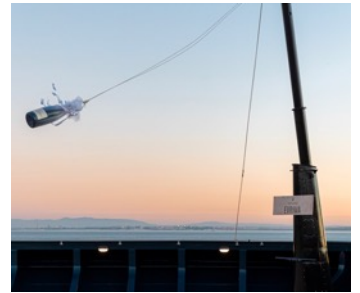
THROUGH OUR GUESTS' EYES



CHRISTENING CEREMONY

EVIRIMA CHRISTENED IN LISBON

- On November 5th, we celebrated the Christening Ceremony of *Evrima*, at the Lisbon Cruise Terminal in Lisbon, Portugal.
- Commemorating this milestone in accordance with longstanding maritime tradition, the Christening Ceremony marks a significant moment in the launch of a new vessel, where after a ceremonial blessing, a bottle of champagne is broken against the bow to bring good luck throughout the yacht's travels.



INTRODUCING THE NEXT GENERATION



Two new superyachts setting sail in 2024 and 2025

Ilma

Origin: Maltese

Meaning: Water

Luminara

Origin: Spanish

Meaning: Child of the stars

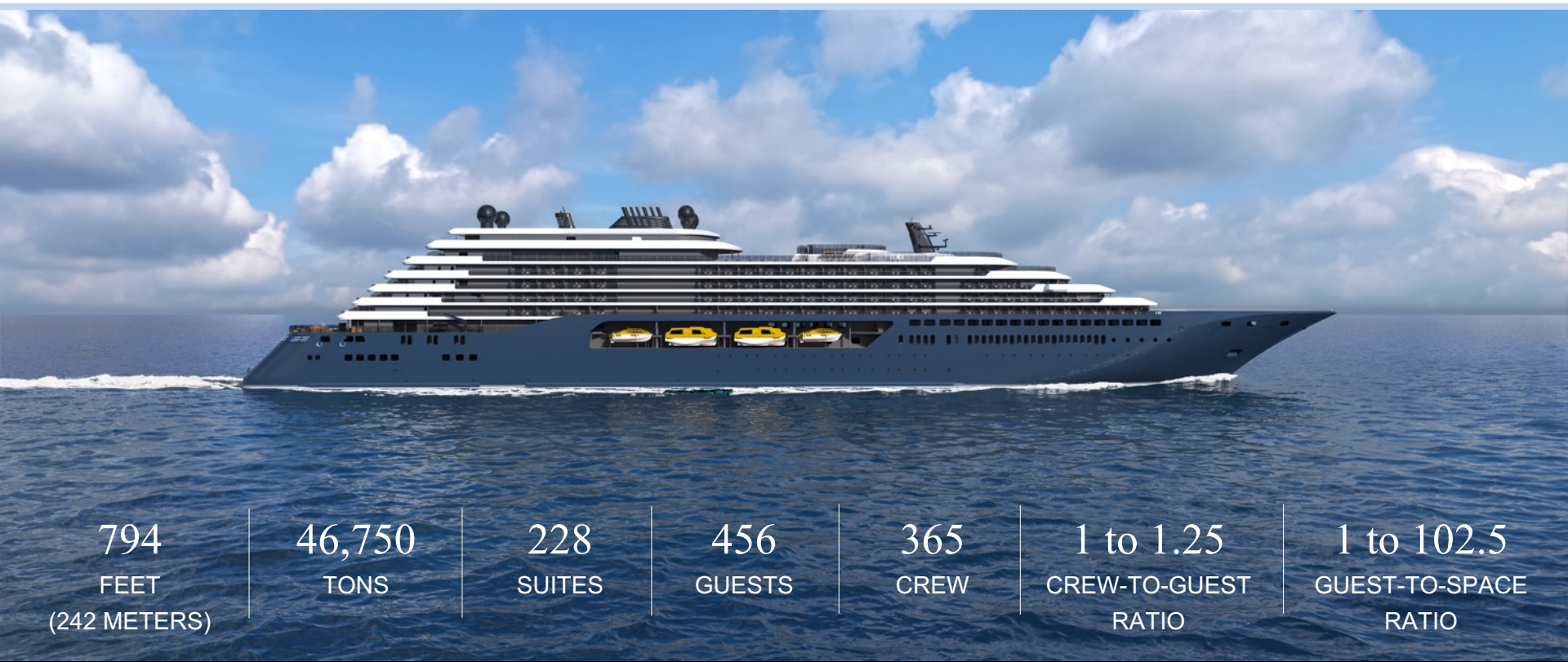
Signature spaces include multiple dining experiences, a wine vault, a Ritz-Carlton Spa and an expanded marina with direct access to the sea. With an enhanced focus on sustainability, the superyachts will be designed with advanced environmental features and technologies to minimize ecological impact.

INTRODUCING THE NEXT GENERATION

- Two new superyachts, *Ilma* and *Luminara*, setting sail in 2024 and 2025 respectively.
- Signature spaces:
 - Multiple dining experiences
 - Wine vault
 - The Ritz-Carlton Spa®
 - Expanded marina with access to the sea.
- Higher percentage of upper suites
- *Ilma* opens for reservations in February 2023
- *Luminara* is scheduled to open for reservations late 2023.



ILMA BY THE NUMBERS



794
FEET
(242 METERS)

46,750
TONS

228
SUITES

456
GUESTS

365
CREW

1 to 1.25
CREW-TO-GUEST
RATIO

1 to 102.5
GUEST-TO-SPACE
RATIO

ILMA STEEL CUTTING



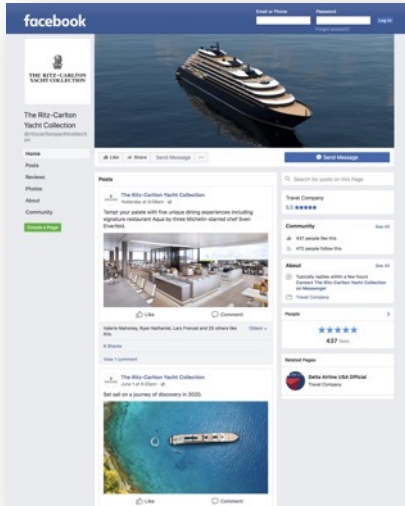
July 13, 2022, the steel-cutting ceremony was held for our second yacht, Ilma, at Chantiers de l'Atlantique in Saint-Nazaire, France.

This maritime tradition, wherein the ship's first piece of steel is cut marks the official start of construction and the beginning of the next generation of superyachts for The Ritz-Carlton Yacht Collection.

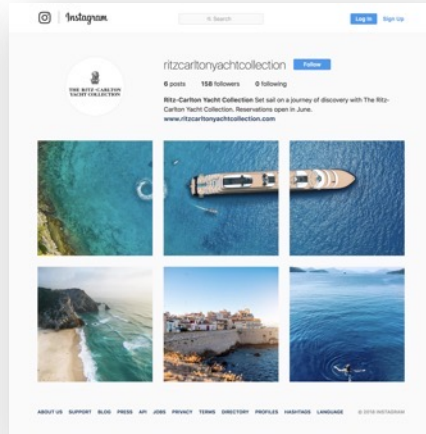
FOLLOW US ON SOCIAL



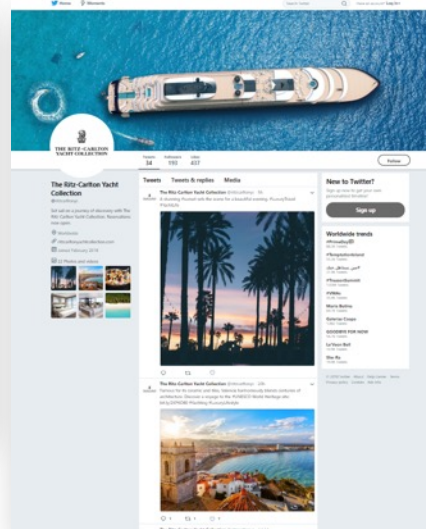
@ritzcarltonyachtcollection



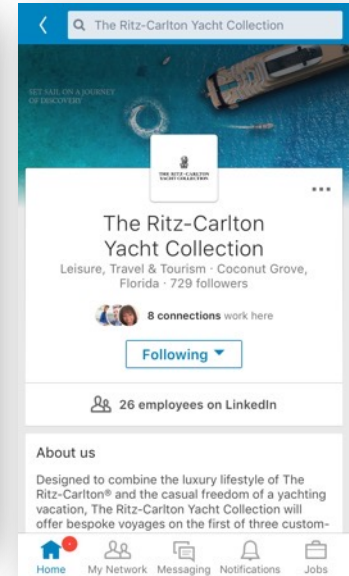
@ritzcarltonyachtcollection



@ritzcarltonyc



The Ritz-Carlton Yacht Collection



CONTACT US

To request a full yacht buy-out or group proposal, email us at events@ritz-carltonyachtcollection.com





THANK YOU